

# ODM Quality Report

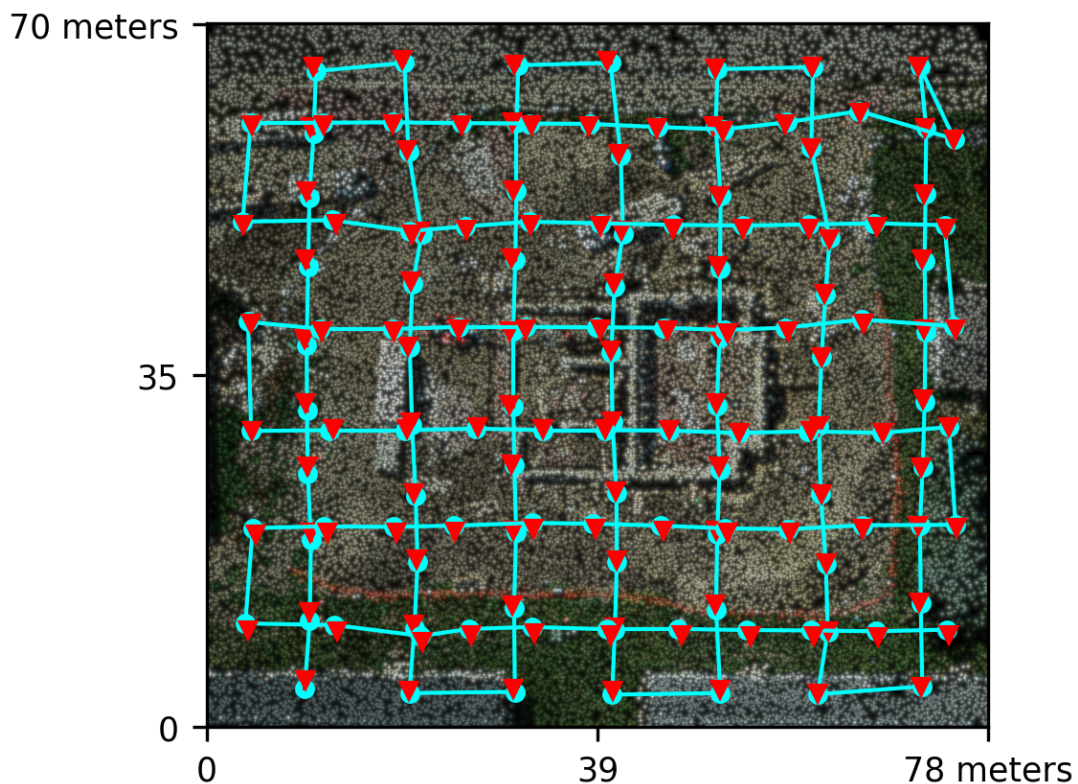
Processed with ODM version 3.1.9

## Dataset Summary

Date	21/08/2023 at 19:17:25
Area Covered	0.004527 km <sup>2</sup>
Processing Time	21.0m:23.0s
Capture Start	20/08/2023 at 15:27:40
Capture End	20/08/2023 at 15:33:51

## Processing Summary

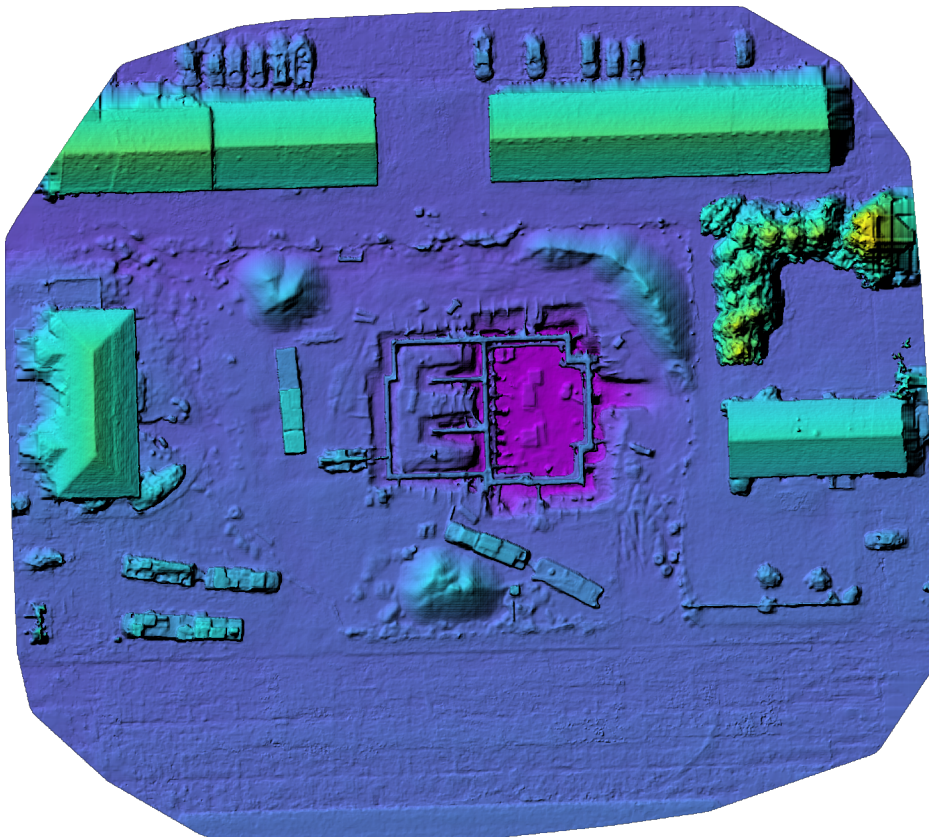
Reconstructed Images	136 over 136 shots (100.0%)
Reconstructed Points (Sparse)	117191 over 118008 points (99.3%)
Reconstructed Points (Dense)	15,035,918 points
Average Ground Sampling Distance (GSD)	2.8 cm
Detected Features	8,186 features
Reconstructed Features	5,354 features
Geographic Reference	GPS
GPS errors	0.48 meters



# Previews



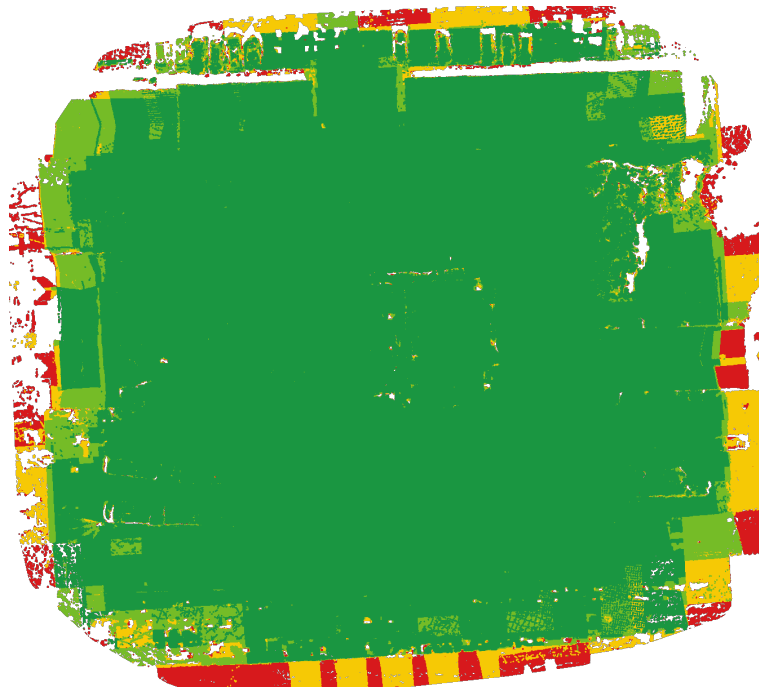
Orthophoto



Digital Surface Model



# Survey Data



■ 2 ■ 3 ■ 4 ■ 5+

## GPS/GCP/3D Errors Details

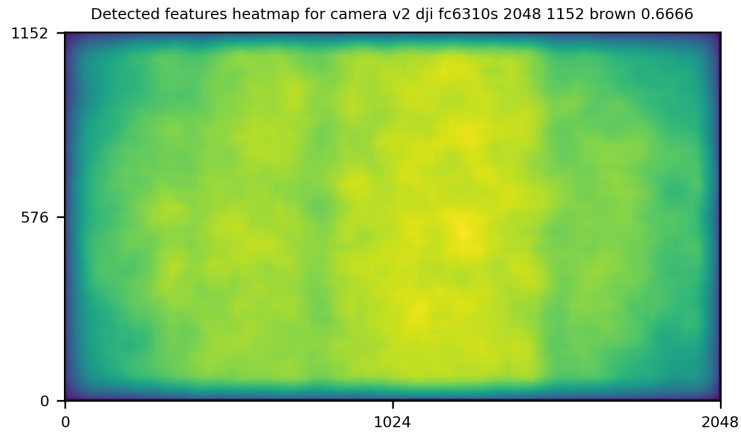
GPS	Mean	Standard Deviation	RMS Error
X Error (meters)	0.000	0.199	0.199
Y Error (meters)	0.000	0.350	0.350
Z Error (meters)	-0.022	0.359	0.359
Total			0.482

3D	Mean	Standard Deviation	RMS Error
X Error (meters)	0.020	0.029	0.035
Y Error (meters)	0.019	0.036	0.041
Z Error (meters)	0.066	0.121	0.138
Total			0.075

	Absolute	Relative
Horizontal Accuracy CE90 (meters)	0.659	0.068
Vertical Accuracy LE90 (meters)	0.605	0.148



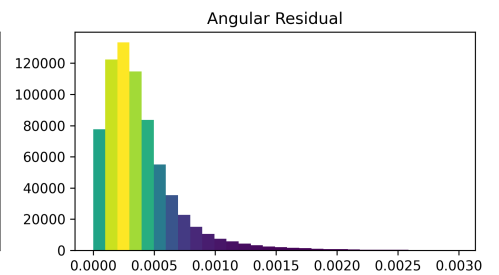
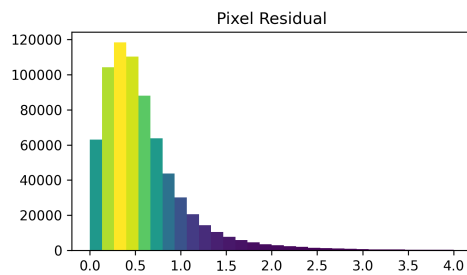
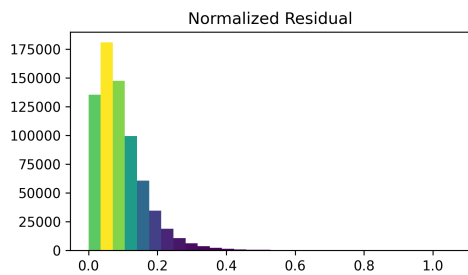
# Features Details



	Min.	Max.	Mean	Median
Detected	6588	9028	8076	8186
Reconstructed	3353	6471	5237	5354

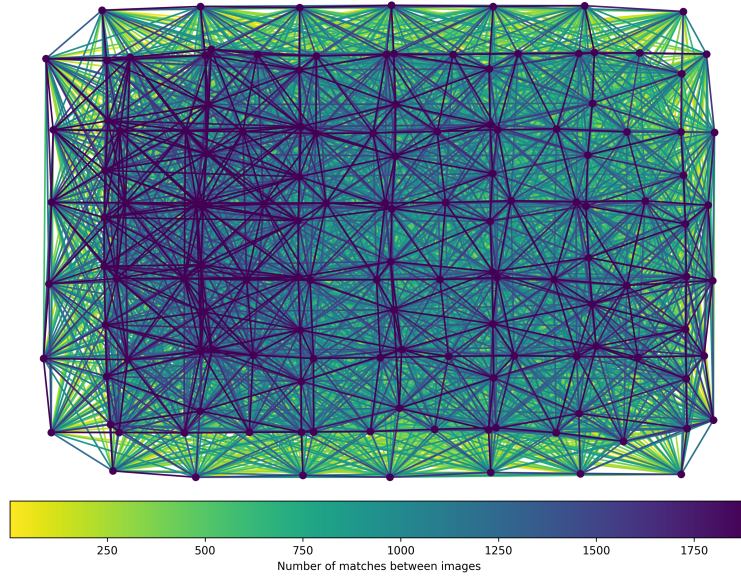
# Reconstruction Details

Average Reprojection Error (normalized / pixels / angular)	0.09 / 0.59 / 0.00039
Average Track Length	6.08 images
Average Track Length (> 2)	8.70 images





# Tracks Details



Length	2	3	4	5	6	7	8	9	10
Count	45827	18850	10599	6860	4986	3861	3152	2681	2187

# Camera Models Details

**v2 dji fc6310s 2048 1152 brown 0.6666**

	k1	k2	k3	p1	p2	focal	aspect_ratio	cx	cy
Initial	0.0000	0.0000	0.0000	0.0000	0.0000	0.6667	1.0000	0.0000	0.0000
Optimized	-0.0148	0.0005	0.0102	-0.0010	-0.0035	0.6533	1.0000	-0.0089	-0.0013

